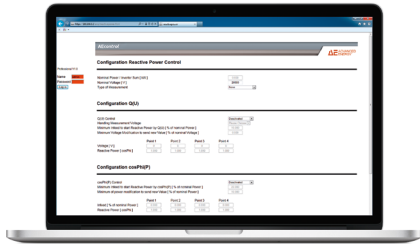


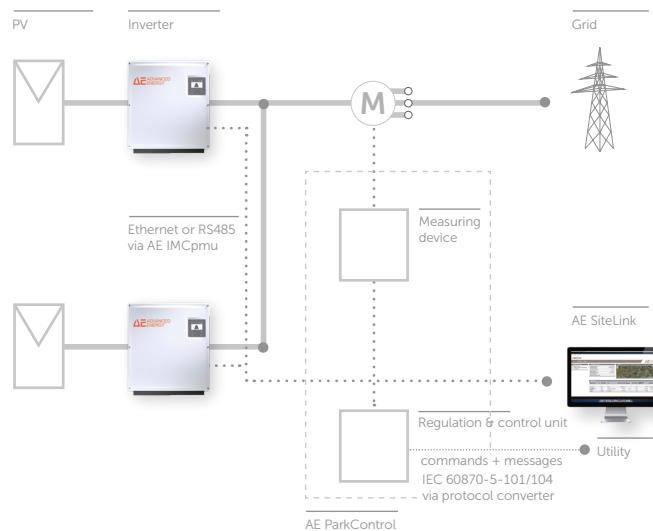
# AE ParkControl

So everything is regulated



- ✓ Flexible feed-in-management
- ✓ Individual and cost-effective
- ✓ Easy installation

Photovoltaic systems in Germany must have a so-called feed-in management. Many other countries also require this in their feed-in connection norms and regulations. The ParkControl is a comprehensive system with which the system operator can record and evaluate all parameters that are important for the feed-in management. Grid operators can adapt the power of a photovoltaic system so that the network is optimally utilized. Power reduction via remote control, dynamic adaptation of the reactive power and power monitoring are some typical features of the ParkControl. The system is installed and operated by computer via an interface or a web browser. Since the requirements vary depending on the system, we offer the ParkControl in four versions. The specifications for the local utilities can be modified via parameters. You always receive an individual solution in which costs and utilization are in an ideal ratio. Besides a direct Ethernet communication, it is also possible to set up a RS485 connection with the AE IMC pmu. A total of 62 inverters can be connected to one AE IMC pmu; and up to 128 AE IMC pmu can be connected to one ParkControl.



TECHNICAL DATA	AE ParkControl Basic	AE ParkControl Classic	AE ParkControl Advanced	AE ParkControl Professional
Art. no.	902R110.000	902R220.000	902R230.000	902R340.000

### APPLICATION

Typical range	< 100 kWp	> 100 kWp	Medium-voltage system	Telecontrol integration
---------------	-----------	-----------	-----------------------	-------------------------

### HARDWARE

Regulating and control unit	1211C	1214C	1214C	1215C
Required accessory modules	-	SB1232	SB1232	CB1241
Multifunction measuring device	-	-	PAC4200	PAC4200
Communications module 7KM	-	-	Switched Ethernet	Switched Ethernet
Number of communication participants	8	128	128	128

### INPUTS/OUTPUTS

Digital inputs for active/reactive power	6	14	14	14
Pulse processing	Yes	Yes	Yes	Yes
Analog input for active/reactive power	-	2	2	2
Reactive power regulation type selection	-	-	Yes	Yes
Single/double messages (60870-5-101)	-	-	-	14/2
Single/double commands (60870-5-101)	-	-	-	10/2
Status outputs	4	10	10	10
Actual feed-in power (analog 0/4 – 20mA)	-	Yes	Yes	-

### CONTROL UNIT AND REGULATION

Transmission cycle [sec.]	10 ... 60	10 ... 60	10 ... 60	10 ... 60
Start-up/shutdown with reduction	-	Yes	Yes	Yes
Static setpoint specification P [%]	Yes	Yes	Yes	Yes
Statische Sollwertvorgabe Q [cosPhi]	Yes	Yes	Yes	Yes
Q(U) characteristic/cosPhi(U) characteristic	-	-	Yes	Yes
CosPhi(P) characteristic	-	-	Yes	Yes
Q fixed value	-	-	Yes	Yes
Telecontrol protocol 60870/-5 -101	-	-	-	Yes

### ACCESSORIES

Protocol converter 60870/-5 -104	-	-	-	Optional
----------------------------------	---	---	---	----------

TECHNICAL DATA	AE IMC pmu
----------------	------------

Art. no.	901R000
----------	---------

### GENERAL DATA

Max. supply power, W	18
Supply voltage	AC 115 ... 230 V / 50 ... 60 Hz (external AC adapter)
Integrated interfaces	Ethernet connection for connection to a modem / ParkControl, 2 x RS485 (galvanically isolated), USB (service interface), digital and analog input and output
Max. controllable inverters	RS485: 2 x 31 inverters, i.e. max. 62 inverters, Total length per branch: max 1000 m

Subject to modification. Technical specifications are subject to change without notice.